



© The Deep



© Lancashire Wildlife Trust



© Bristol Zoological Society

Annual Review

2023 - 2024



Building communities. Transforming lives.



Contents



© Lichfield & Hatherton Canals Restoration Trust



© Eversley Village Hall



© Bristol Zoological Society



© The Customs House



© Swannington Play Area

- 3 Foreword
- 5 Financial Summary
- 6 Main Grants Scheme
- 10 Partnership Grants Scheme
- 13 Biffa Award Board
- 14 Funders Background

Stewart Goshawk, Biffa Award Chair

As I complete my second year as Chair, I am thrilled to reflect on Biffa Award's remarkable achievements. It has been a real privilege to grant more than £4.6 million to community and biodiversity projects, significantly benefiting many lives and local habitats.

We proudly distributed funds to 33 initiatives through the Main Grants Scheme. Two thirds of these projects breathed new life into village halls and community centres. These renovations have transformed them into vibrant hubs, fostering unity and enhancing community spirit. Investing in such facilities is vital to ensure they thrive, offering safe and welcoming spaces for the young, elderly, and vulnerable to gather and connect.

I've also visited some remarkable Partnership Grants Scheme projects, each leaving a lasting mark. These pivotal projects of regional or national scope have been making enhancements to revive, update, and enrich facilities that educate and involve the public, or to enhance the natural environment which sustains various scarce and rare species and habitats.

Since 1997, Biffa Award has awarded more than £189 million to projects as part of the Landfill Communities Fund. What an outstanding accomplishment!

Stewart Goshawk

Biffa Award Chair

Rachel Maidment, Biffa Award Grants Manager

As we reflect on another dynamic year of giving grants to diverse projects throughout England and Northern Ireland, I am immensely proud of the Biffa Award team.

Building thriving communities lies at the heart of our mission at Biffa Award. We believe in empowering local initiatives that foster social cohesion, improve public spaces, and create lasting positive impacts for residents. From revitalising urban parks to supporting cultural heritage projects, each grant awarded is a testament to our commitment to nurturing vibrant communities that flourish and grow.

The importance of funding these areas cannot be overstated. It is through strategic investments in community projects and nature conservation that we secure a sustainable future for all. We empower local leaders, organisations, and volunteers to make a difference in their communities and natural surroundings.

Don't miss out on our exceptional funding opportunities! If your project aligns with our guidance notes, we are eager to hear from you. Visit the **Biffa Award website** and enter your project postcode into the checker to see if you meet our distance criteria.

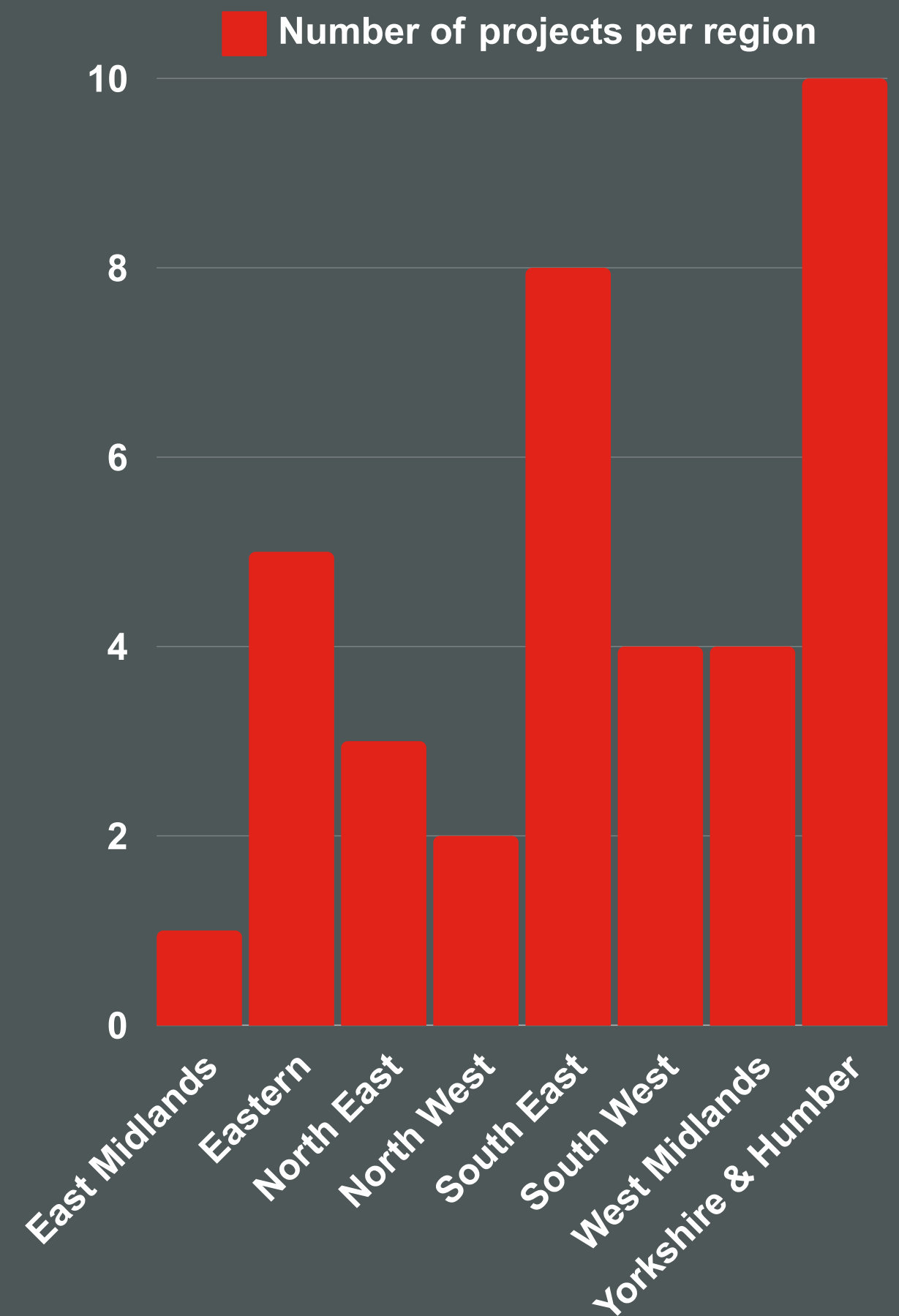
Rachel Maidment

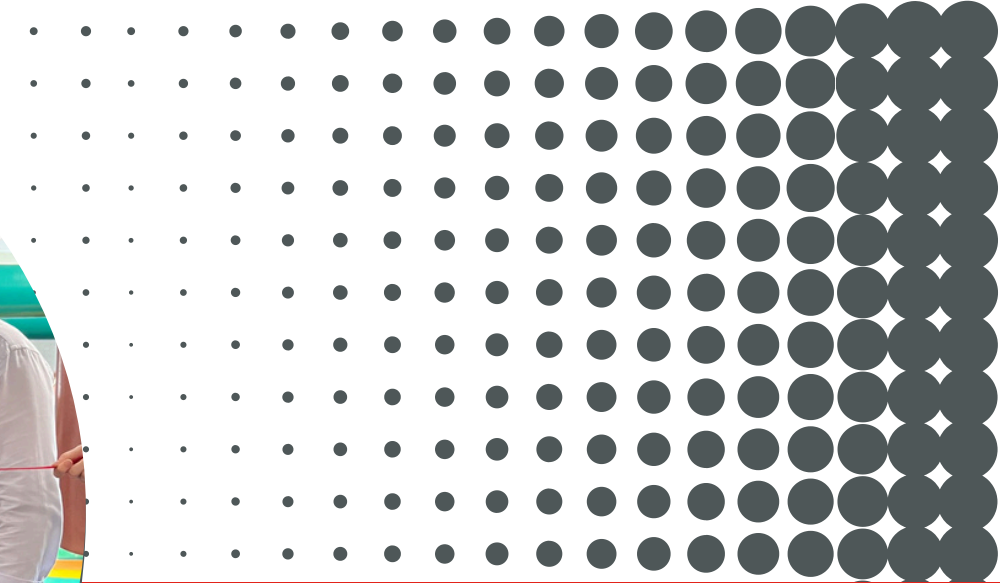
Biffa Award Grants Manager

Financial Summary

During the 2023-2024 financial year, Biffa Award funded 33 Main Grants Scheme projects across four themes: 21 Community Buildings, 1 Cultural Facilities, 8 Recreation and 3 Rebuilding Biodiversity.

Through the Partnership Grants Scheme, we funded 5 large-scale projects including 3 under the Natural Environment theme to benefit nature’s recovery and 2 under the Built Environment theme to benefit local communities.





Main Grants Scheme: Community Buildings

Transform North East



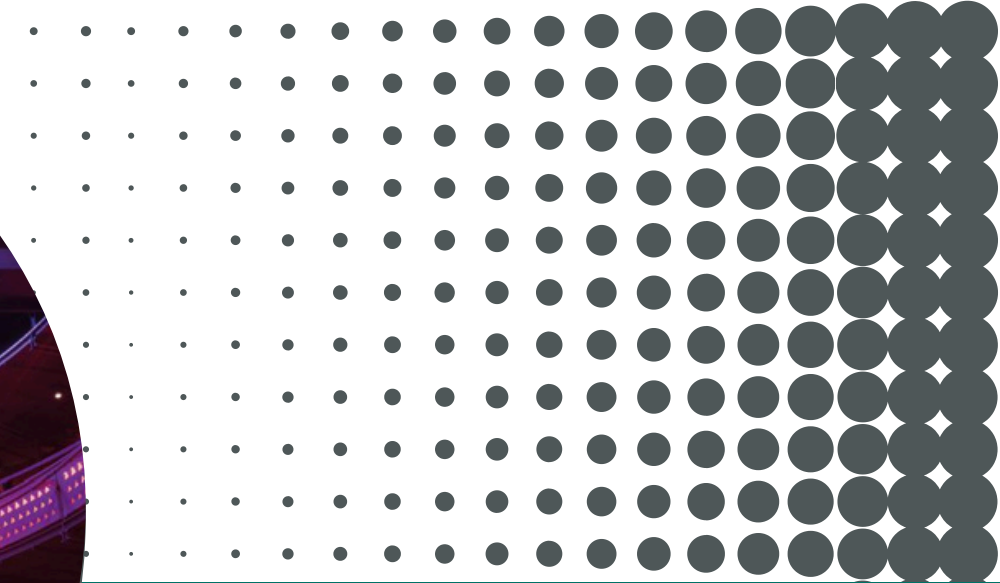
Transform North East, a vibrant community hub in Sunderland, serves as a vital resource for local residents. Despite its heavy use, the building was not adequately equipped to meet the community's needs.

Recognising this, Biffa Award granted £74,154 for essential renovations. These upgrades included the installation of double-glazed windows, a high-efficiency heating and air conditioning system, and the addition of four new toilets.

Completed in April 2024, these improvements have transformed the building into a fully functional space, ensuring its continued use by the broader public. The project has significantly enhanced community engagement, enabling more community activities and events that promote mental health, well-being, and reduce social isolation.

[Watch the project video here](#)





Main Grants Scheme: Cultural Facilities

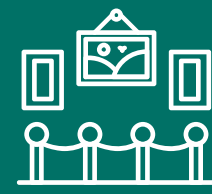
The Lowry Quays



The Lowry Quays is a performing arts theatre in Salford, Manchester. The building offers visitors three theatre spaces, galleries, three conferencing and event spaces, a bar and restaurant and gift shop.

Biffa Award granted £74,816 to fully refurbish the seating in the Quays auditorium, as the current seats, which are 25 years old, were in extremely poor condition and no longer fit for purpose.

The project is set to complete by late 2024 where the venue will continue hosting diverse performances and community programmes, including free creative activities for more than 1,700 local children.



Main Grants Scheme: Rebuilding Biodiversity

Dearne Valley



Old Moor Dearne Valley is owned by RSPB. The site contains 89-hectares of breath-taking wetland habitat with sweeping views where the public can enjoy idyllic walks, wildlife watching and pond-dipping.

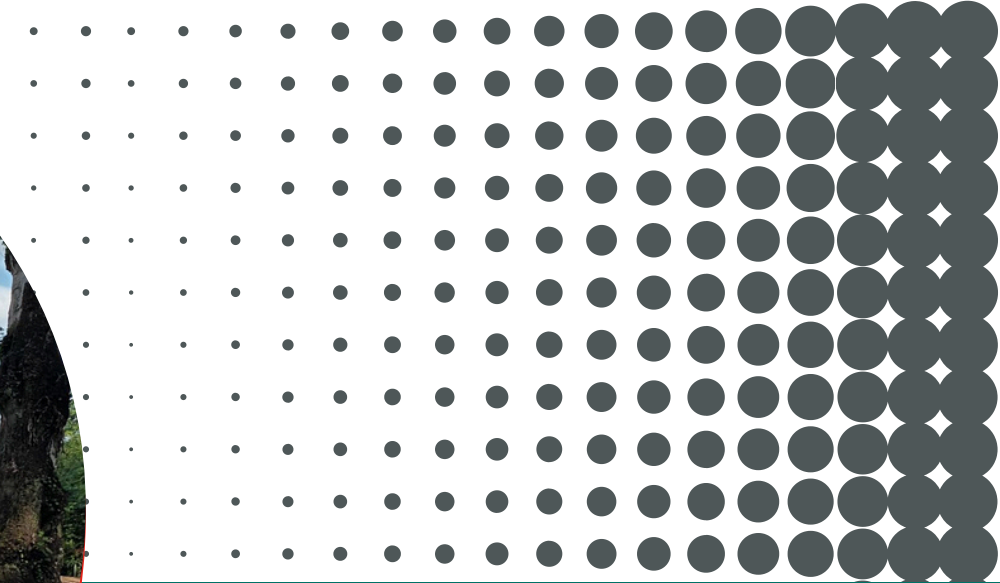


[Watch the project video here](#)

Biffa Award provided a grant of £37,599 to improve 9.7 hectares of wetland and redesign a prominent body of water, creating an expanded feeding and nesting area for wildlife.

The project completed in April 2023 and will bring wildlife closer to people in a mutually beneficial way across the reserve. Funding this project has improved habitat for birds of conservation concern and enhanced the overall biodiversity of the reserve.






Main Grants Scheme: Recreation

Mere Sands Wood



Mere Sands Wood, a former sand quarry is now owned by Lancashire Wildlife Trust. The site spans 42-hectares and is a true wildlife haven nestled amongst the peaceful agricultural landscape in the county of Rufford.

[Watch the project video here](#)

Biffa Award provided a grant of £75,000 to give safe unhindered access around the nature reserve by building eight culverts as well as the construction of a viewing hide. Improvements were urgently needed due to tripping hazards throughout the reserve.

The project completed in April 2023 and the improvements have since encouraged return visits as well as attracting visitors who would not ordinarily visit a nature reserve, giving more people the opportunity to engage with nature.



Partnership Grants Scheme

Wilderness Foundation UK: Mann Wood



Suffolk Wildlife Trust: Martlesham Wilds



Cornwall Wildlife Trust: Helman Tor Nature Reserve



The Wildlife Trust for Bedfordshire, Cambridgeshire and Northamptonshire: Securing Strawberry Hill



Bristol Zoological Society: Gorilla Learning Space

We awarded
£3,524,818 to five
Partnership Grants
Scheme projects.

The Deep: Built Environment

The Deep is an educational and conservation charity with an awe-inspiring aquarium. The site is based in Hull and open for all to explore and enjoy.

New exhibits include a hands-on STEM, crafting, and water play station, a high-tech jellyfish and plankton exhibition, and an interactive educational station about East coast rocky seashores. All appealing to diverse audiences of all ages, engaging hundreds of thousands of people each year and educating them in the regionally unique marine life.

Biffa Award provided £418,550 for these developments, which finished in January 2023. The venue previously drew 8,000 visitors per week; now, with the improvements, it attracts nearly 9,000 visitors weekly.



[Watch the project video here](#)

The Customs House: Built Environment

The Customs House is an arts and entertainment venue for all. The site is based in South Shields and aims to enhance cultural engagement by creating inspiring and exciting spaces.

The organisations goal was to create inspiring spaces to promote creativity, learning and participation in the arts. Funding allowed the organisation to install retractable seating in the main auditorium to make it a more flexible space, replace existing cinema seating, and to create an immersive interactive theatre experience, and a participation hub to deliver comprehensive engagement programmes.

Biffa Award provided £390,784 for the improvements, which finished in January 2023. The updgrade will increase arts participation, promoting better mental health and overall quality of life for the community.



[Watch the project video here](#)

Biffa Award Board



**Simon
Rutledge, Biffa
Group Ltd**

Simon has 30 years of experience within waste management and the wider safety, environmental and sustainability management field. He is currently the Biffa lead for Waste Policy and Sustainability.



**Patience
Thody, RSWT**

Patience joined RSWT from the banking sector where she held various roles in both Operations and HR. Within RSWT she was appointed Director of Operations in March 2014 and appointed Deputy CEO in April 2020.



**Mick Davis,
Biffa Group
Ltd**

Mick's early career was centred around mineral extraction and land management. He first joined Biffa in 1990 and this is his third 'tour of duty'. He has undertaken various roles before his current role as COO for Resources and Energy.



**Stewart
Goshawk,
Chair**

Stewart is both a past Hon Secretary of RSWT and chair of trustees at Essex Wildlife Trust. He works for the Professional Footballers Association supporting ex-players who have dementia and has prior roles in the sports and grant-making worlds.



**Vicky Clack,
Biffa Group Ltd**

Since joining Biffa in 2005, Vicky has moved up through the ranks gaining experience in environmental management, legislation, permitting and compliance. In her current role as National Environmental Control Manager she sits on various industry working groups and leads a team of 20 across the UK.



**Debbie
Tann, MBE**

Debbie is the CEO of Hampshire & Isle of Wight Wildlife Trust. She began her career as an ecologist before moving into policy and campaigning and then into senior management and leadership. She has worked at Defra and served on a number of Boards and Advisory Committees in her 25 years in the environment sector.



Royal Society of Wildlife Trusts (RSWT)

Biffa Award is managed by the grants team at the Royal Society of Wildlife Trusts (RSWT). The Wildlife Trusts are a grassroots movement of people from a wide range of backgrounds. There are 46 individual Wildlife Trusts, each of which part of is The Wildlife Trusts federation and a corporate member of the Royal Society of Wildlife Trusts.

Landfill Communities Fund

The Government's Landfill Communities Fund is an innovative tax credit scheme enabling landfill operators to contribute money to fund community projects situated in the vicinity of landfill sites.

Entrust

Entrust acts on behalf of HM Revenues and Customs as the sole regulator of the Landfill Communities Fund.



© Bristol Zoological Society

X @BiffaAward

f @Biffa Award

in @Biffa Award

▶ @biffaaward9199